

Service description

Product: SP200	Service description no: 3112-S007	Ver: 1
-------------------	---	-----------

Symptom

Imbalance in the drive shaft.

Caused by

The drive shaft is bent. The pump has been crashed against something.

Solution

Replace the drive shaft. If the cover tube is bent, this must also be replaced.

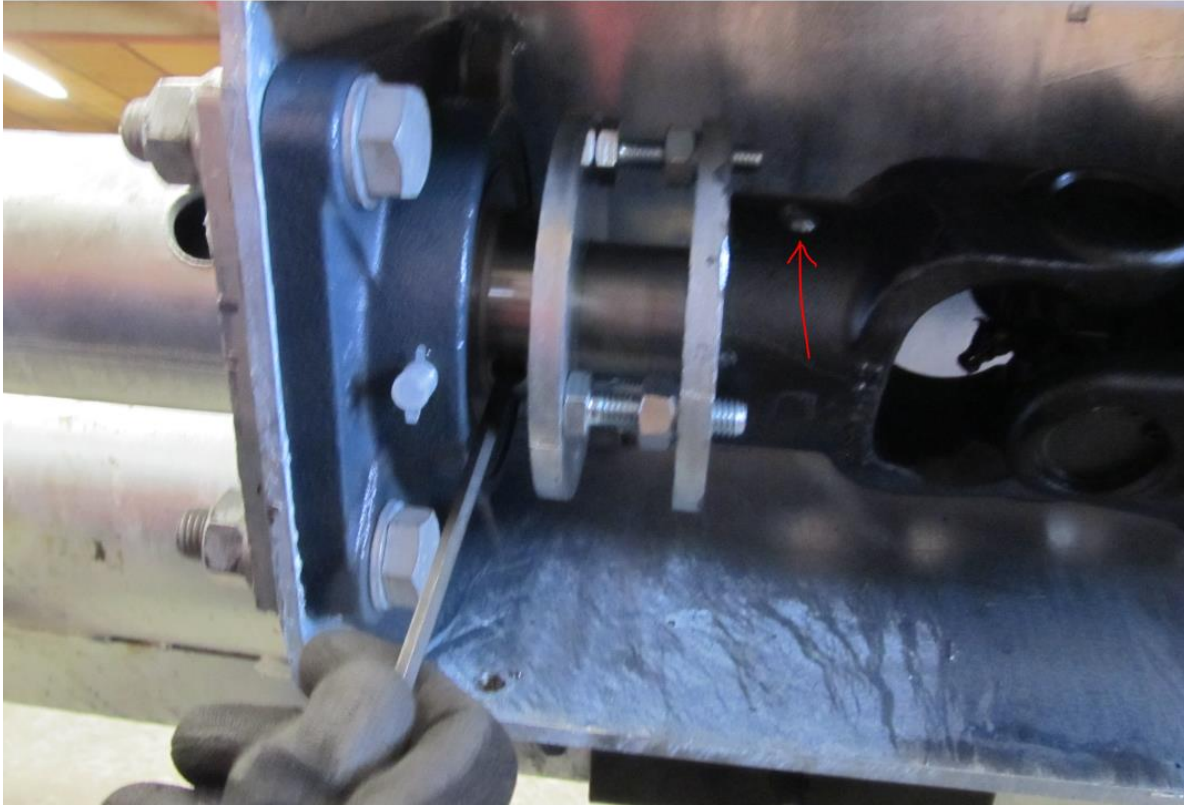
Loosen up the set screws on the cover tube.



Release the cover tube at both ends. Then the bearing will also come loose.



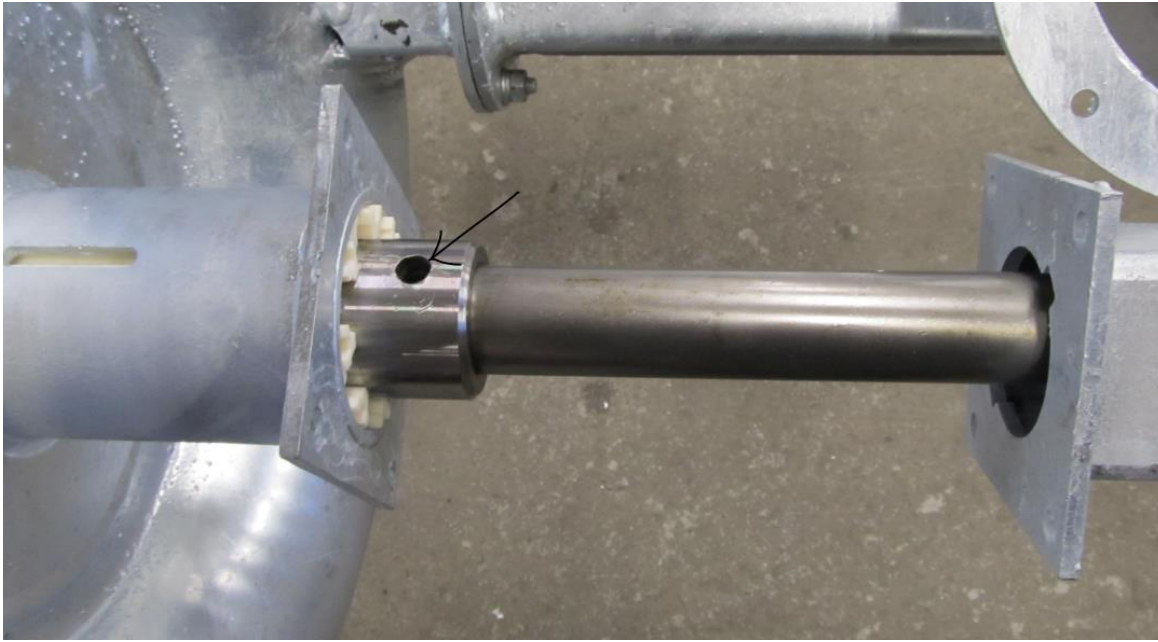
Take out the breaker bolt that secures the drive shaft to the double joint. Loosen set screws on the bearing.



Release the cutter on the pump housing.



Pull out the drive shaft and impeller together. Check for runout in the drive shaft. If there is runout in the shaft, take out the breaker bolt that secures the impeller to the drive shaft.



Remove the impeller from the drive shaft.

Push the new drive shaft through the pump housing and the cover tube.

Assemble the pump by following the instructions in reverse order.